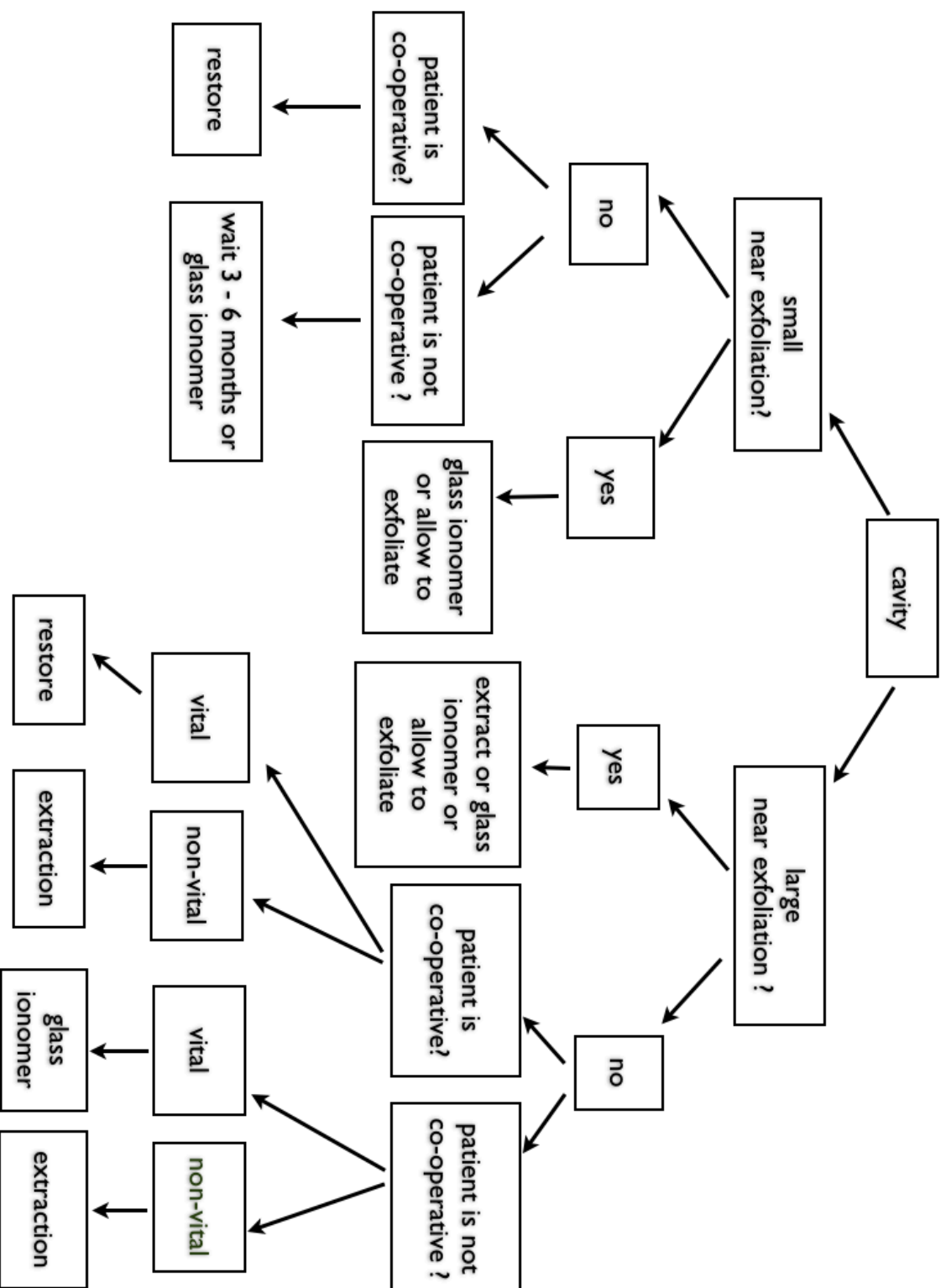


Dr. Carla Cohn
Buffalo Niagara
Dental Meeting
Afternoon Session
October 4, 2012
www.kidsdental.ca
drcohn@shaw.ca



GLASS IONOMER

Armamentarium

Mirror
Explorer
Air Water Syringe Tip
Suction Tips
Gauze
Q Tip topical anaesthetic
Syringe, needle, anaesthetic - if necessary
Rubber Dam set up (includes rubber dam, forceps, clamp, floss and frame)
Dry angles
Cotton rolls
High speed hand piece
FG burs 330 (pear shaped)
Slow speed hand piece
LA burs # 2 (smallest round)
Condenser
Ball or anatomical burnisher
T₃
Etch or Cavity Conditioner
Glass Ionomer
Glass Ionomer applicator
Bond
Flowable
Triturator
Curing light



Procedure

Apply anaesthetic as required.

Isolate tooth, rubber dam is preferable, although dry angles / cotton is acceptable.

Prepare tooth as required.

Etch 10 seconds with cavity conditioner.

Wash and dry. Leave tooth slightly moist.

Activate and triturate GI capsule for 10 seconds.

Apply GI or RMGI as indicated in a single increment.

Wet surface of instrument with coat.

Burnish or pack into place. Light cure 40 seconds.

If possible, self etch and apply flowable (as a sealant).

Light cure 40 seconds.

COMPOSITE RESTORATION POSTERIOR

Armamentarium

Mirror
Explorer
Air Water Syringe Tip
Suction Tips
Gauze
Q Tip, topical
Anaesthetic, syringe and needle
Rubber Dam set up (includes rubber dam, forceps, clamp, floss and frame)
High speed hand piece
FG burs 330 (pear shaped), 556 (straight fissure), 169 (tapered fissure)
Slow speed hand piece
LA burs 2, 4, 6, 8 (rounds), 35 (inverted cone)
Excavator
Condenser
Burnisher: ball and / or anatomical
T₃
Flat
Etch
Bond (bond dish, micro brush)
Matrix system or T Bands and wedge
Flowable composite
Packable composite
Curing light



Procedure

Apply topical anaesthetic with Q-tip

Anaesthetize

Isolate tooth with rubber dam.

Prepare tooth for restoration.

Wash and dry thoroughly.

Place matrix if interproximal restoration.

Etch 10 seconds. Wash and dry thoroughly.

Bond, scrub the surface of the tooth with a micro brush dipped in bond.

Air dry 5 seconds.

Light cure 10 seconds.

Apply a thin layer of flowable composite - do not cure. This should make up approximately 10% of the fill.

Bulk fill with packable composite. Shape.

Light cure 40 seconds.

Apply flowable composite to entire occlusal surface and light cure 40 seconds.

Remember:

Isthmus must be kept small.

Pulp horns are close to the DEJ.

Keep interproximal walls conservative.

Extend gingival box below contact point.

Retention is important as enamel in primary teeth is approximately 50% thinner than permanent teeth.

NUSMILE PREVENEERED STAINLESS STEEL CROWN

Armamentarium

Mirror
Explorer
Air Water Syringe Tip
Suction Tips
Gauze
Q Tip, topical anaesthetic
Anaesthetic, syringe and needle
Rubber Dam set up (includes rubber dam, forceps, clamp, floss and frame)
High speed hand piece
FG burs 556 (straight fissure), 169 (tapered fissure)
Slow speed hand piece
LA burs 8 (round)
T₃
NuSmile crowns
Cement
Spatula
Mixing pad
Set up for pulpotomy



Procedure

Apply topical anaesthetic with Q-tip

Anaesthetize

Isolate tooth with rubber dam.

2 - 3 mm occlusal or occlusal reduction with high speed # 556 - follow inclines of cusps.

Bevel buccal and lingual occlusal line angles.

Circumferential reduction - with high speed # 556, followed by high speed # 169.

No ledges!

Remove decay - slow speed # 8.

Treat pulpally if necessary.

Fit crown.

Should be a passive fit.

Check occlusion - critical to prevent fractures.

Remove with T3

Fill 1/2 way with glass ionomer cement.

Seat, clean cement, remember to floss interproximally.

STRIP CROWN

Armamentarium

Mirror
Explorer
Air Water Syringe Tip
Suction Tips
Gauze
Q Tip, topical anaesthetic
Anaesthetic, syringe and needle
Rubber Dam set up (includes rubber dam, forceps, clamp, floss and frame)
High speed hand piece
FG burs 556 (straight fissure), 169 (tapered fissure)
Slow speed hand piece
LA burs 2, 4, 6, 8 (round)
T₃
Strip crown forms
Orthodontic separators
Etch and Bond
Flowable composite.
Composite and / or Glass Ionomer
Polishing cups.



Procedure

Apply topical anaesthetic with Q-tip

Anaesthetize

Isolate tooth with rubber dam.

1 - 2 mm incisal reduction with high speed # 556 - follow inclines of cusps.

1 mm circumferential reduction - with high speed # 556, followed by high speed # 169.

Feather edges, no ledges.

Remove decay - slow speed # 8 or as needed.

Place orthodontic separators sub gingivally to retract and for hemorrhage control.

Fit crowns.

All crowns must fit simultaneously.

Create vent on incisal edge of crown form.

Etch, wash and dry all teeth to be restored.

Bond, air dry and cure 10 seconds.

Place a thin layer of flowable composite - do not cure.

Fill crown forms with composite.

Seat fully, remove excess.

Cure, cure, cure!

Remove strip crown forms and orthodontic separators.

Finish and polish.

BIODENTINE PULPOTOMY

Armamentarium

As per stainless steel crown or preveneered stainless steel crown

PLUS

Large sharp excavator
Sterile cotton pellets
Sterile gauze
Cotton pliers
Saline
Biodentine
Amalgam carrier
Condenser
Triturator



Procedure

Prepare tooth for full coverage.

Remove gross caries.

Remove roof of pulp chamber.

Incise coronal pulpal tissue with excavator.

Place pressure with sterile cotton pellet or sterile gauze to stop hemorrhage.

Saline to irrigate

Remove pellet, hemorrhage should be minimal.

Mix Biodentine according to manufacturers directions.

Fill chamber with Biodentine and pack gently into canals.

Cement crown.